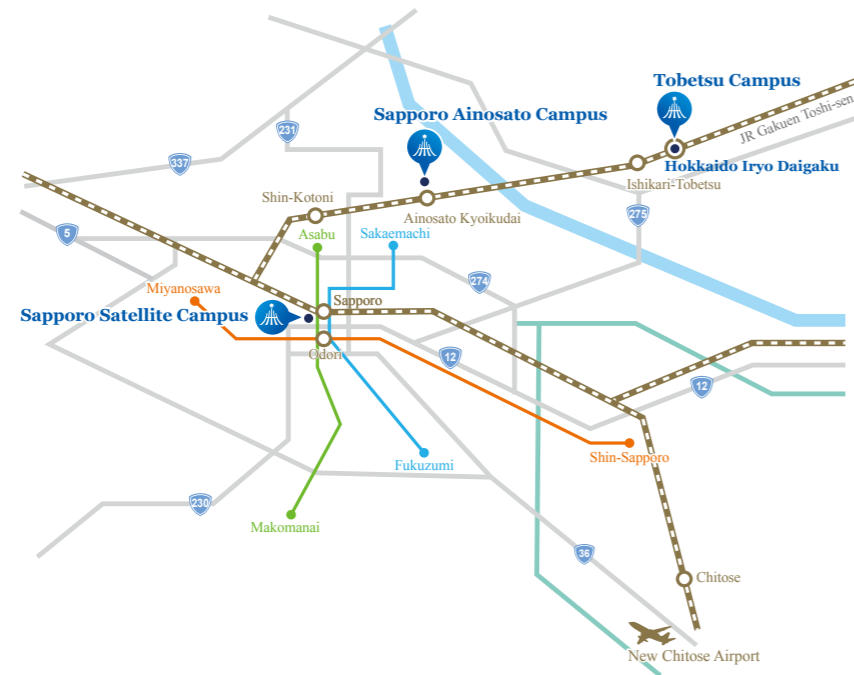
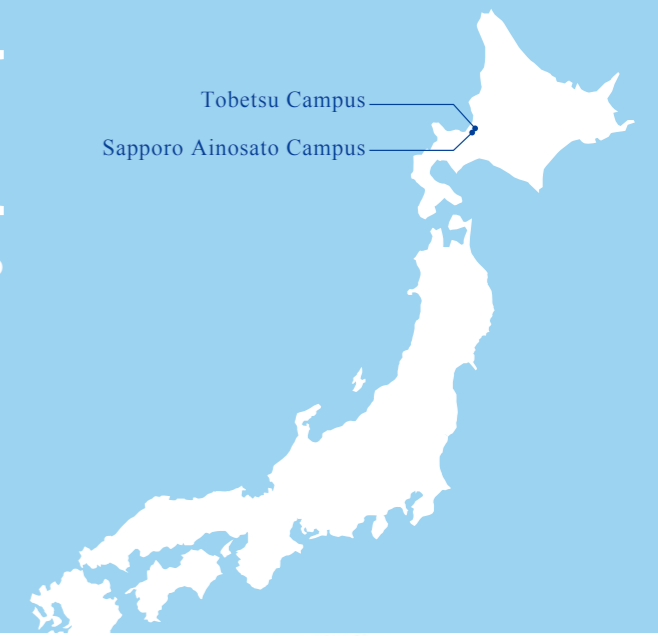


# HSUH

Health Sciences University of Hokkaido

- School of Pharmaceutical Sciences
- School of Dentistry
- School of Nursing & Social Services
- School of Psychological Sciences
- School of Rehabilitation Sciences
- School of Medical Technology
- Dental Hygiene School Attached to School of Dentistry

Tobetsu Campus  
Sapporo Ainosato Campus



The Health Sciences University of Hokkaido (HSUH) is located in Tobetsu, approximately 40 kilometers from central Sapporo. Sapporo is the fifth largest city in Japan (population: apx. 1,973,000) and hosted the 1972 Winter Olympics. The world-famous Sapporo Snow Festival is held in early February each year. The Tobetsu Campus, can be easily reached by train ride from Sapporo Station using the Japan Railway (JR) Gakuen Toshi-sen (40-minute ride) and directly connected to JR HSHU station. The Sapporo Ainosato Campus is reachable via the same train line (22-minute ride).



1757, Kanazawa, Tobetsu-cho, Ishikari-gun, Hokkaido 061-0293 JAPAN  
Telephone : +81-133-23-1211 Facsimile : +81-133-23-1669  
Website : <http://www.hoku-iryo-u.ac.jp>  
E-mail : [globalnetworkingoffice@hoku-iryo-u.ac.jp](mailto:globalnetworkingoffice@hoku-iryo-u.ac.jp)



## CONTENTS

HSUH Chronology / Organization .....	03
A Message from the President .....	04
<span style="color: green;">■</span> School of Pharmaceutical Sciences .....	05
<span style="color: purple;">■</span> School of Dentistry .....	06
<span style="color: orange;">■</span> School of Nursing & Social Services .....	07
<span style="color: teal;">■</span> School of Psychological Sciences .....	08
<span style="color: red;">■</span> <span style="color: blue;">■</span> School of Rehabilitation Sciences .....	09
<span style="color: darkblue;">■</span> School of Medical Technology .....	10
<span style="color: purple;">■</span> Dental Hygiene School .....	11
Graduate Schools .....	12
Partner Institutions .....	14
Campus Facilities (Tobetsu Campus) .....	15
Campus Facilities (Sapporo Ainosato Campus & Others) .....	18



# HSUH

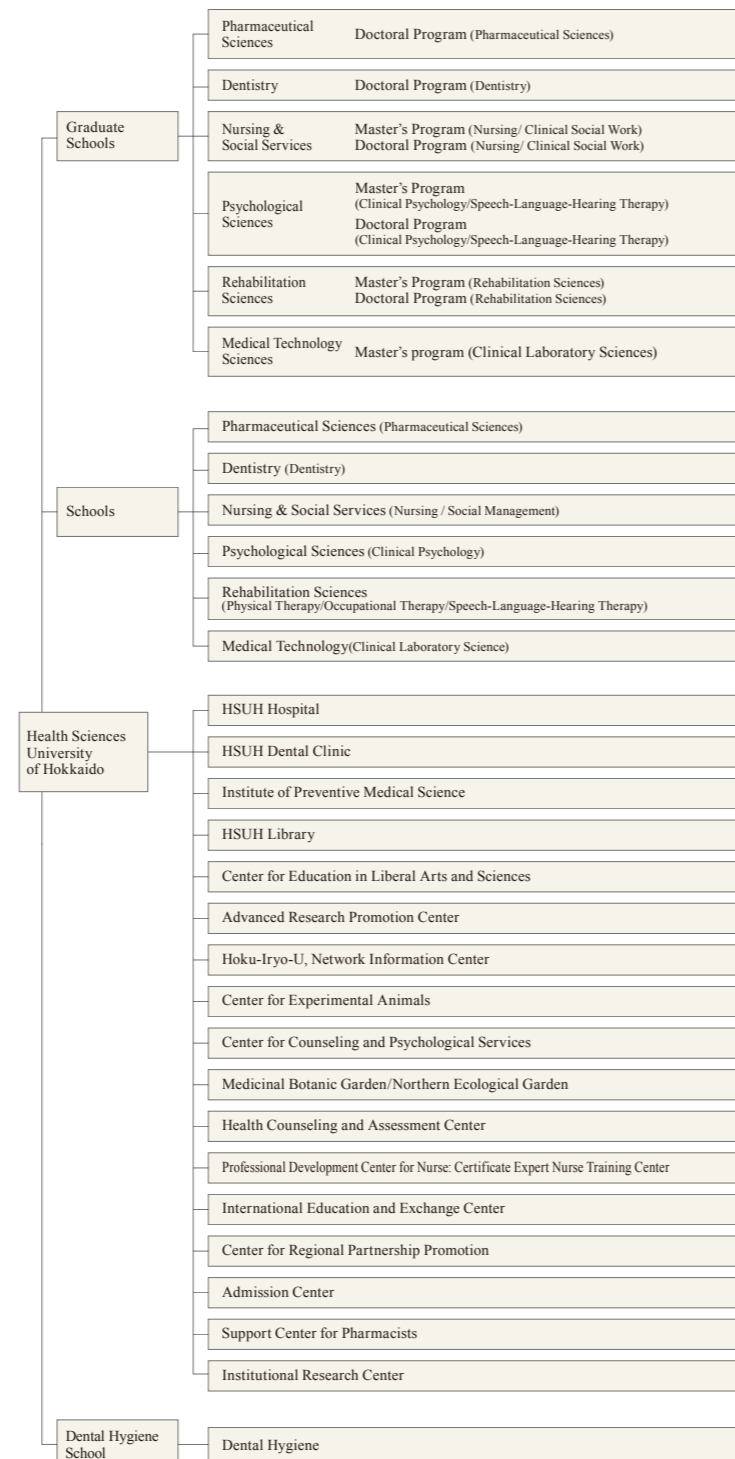
Health Sciences University of Hokkaido



## HSUH Chronology

- 1974 Higashi-Nippon-Gakuen University, School of Pharmaceutical Sciences
- 1978 School of Dentistry, Graduate School of Pharmaceutical Sciences (Master's Program), Attachment of the Dental Hospital to School of Dentistry
- 1982 Center for Radioisotope Studies, Graduate School of Pharmaceutical Sciences (Doctoral Program)
- 1984 Dental Hygiene School
- 1985 Relocation of the General Education to Tobetsu
- 1986 Postgraduate Program for Pharmaceutical Sciences (1-Year Program), Sasaki Memorial Hall/HSUH Library
- 1988 Graduate School of Dentistry (Doctoral Program), Center for Experimental Animals
- 1990 Sapporo Medical Welfare School (Nursing/Care Workers), Institute of Medical Science, Medical and Dental Clinic
- 1991 Sapporo Medical Welfare School (Speech Therapists:3-Year Program)
- 1992 Sapporo Medical Welfare School (Speech Therapists:2-Year Program)
- 1993 School of Nursing and Social Services (Nursing/Social Work/Clinical Psychology)
- 1994 Change of name to Health Sciences University of Hokkaido. Accreditation by the Japanese University Accreditation Association. The Research Institute of Medical Science, Barato Educational Training Center, 20th Anniversary Memorial Hall
- 1996 Reorganization of the School of Pharmaceutical Sciences, Master's Program in Clinical Pharmacy at the Graduate School of Pharmaceutical Sciences, Health Counseling and Assessment Center
- 1997 Graduate School of Nursing & Social Services (Master's Program) (Nursing/Clinical Social Work and Clinical Psychology)
- 1998 Hoku-Iryo-U Network Information Center
- 1999 Graduate School of Nursing & Social Services (Doctoral Program) (Nursing/Clinical Social Work and Clinical Psychology)
- 2000 NICE (National and International Collaborative Extension) Center, Club House
- 2001 Sapporo Satellite Campus
- 2002 Research Institute of Personalized Health Sciences (Change of name to Research Institute of Health Sciences in 2017), School of Psychological Sciences, School of Nursing & Social Services
- 2003 Center of Clinical & Developmental Psychology (Change of name to Center for Counseling and Psychological Services in 2020)
- 2004 Closure of the Sapporo Medical Welfare School, Graduate School of Nursing & Social Services (Doctoral Program) (Clinical Social Work) (Clinical Psychology), Dental Health Plaza
- 2005 Professional Development Center for Nurses: Certified Expert Nurse Training Center, HSHU Hospital, Dental and Medical Clinic, Institute of Medical Science (Change of name to Institute of Preventive Medical Sciences in 2017)
- 2006 Abolition of the Postgraduate Program for Pharmaceutical Sciences, Graduate School of Psychological Sciences (Doctoral Program) (Communication Disorders), School of Pharmaceutical Sciences (6-Year Course)
- 2007 Center for Development in Higher Education (Change of name to Center for Education in Liberal Arts and Sciences in 2019)
- 2008 Teacher Training Course (Clinical Social Work)
- 2009 Research Center of Northern Traditional Medicines
- 2010 Graduate School of Pharmaceutical Sciences (Master's Program) (Division of Life Sciences)
- 2012 Graduate School of Pharmaceutical Sciences (Doctoral Program) (Pharmaceutical Sciences)
- 2013 School of Rehabilitation Sciences (Physical Therapy/Occupational Therapy), Graduate School of Rehabilitation Sciences (Master's Program) (Rehabilitation Sciences)
- Global Networking Office (Change of name to International Education and Exchange Center in 2017)
- Regional Partnership Office (Change of name to Center for Regional Partnership Promotion in 2017)
- 2015 School of Rehabilitation Sciences (Speech-Language-Hearing Therapy), Graduate School of Rehabilitation Sciences (Doctoral Program) (Rehabilitation Sciences)
- Regional Comprehensive Care Center
- 2016 Cancer Prevention Institute
- 2017 Admission Center
- 2018 Institutional Research Center
- 2019 School of Medical Technology (Clinical Laboratory Science)
- 2020 Advanced Research Promotion Center
- 2023 Graduate School of Medical Technology Sciences (Clinical Laboratory Sciences)

## Organization



## A Message from the President



President  
Masahiro Asaka, M.D., Ph.D.

Health Sciences University of Hokkaido was established on an educational ideal that aimed to combine knowledge, virtue, and physical well-being in 1974. We, "the northern base for fostering new health professionals", are a medical based university devoted to the social mission of nurturing specialists for regional healthcare. Our university is comprised of six faculties and graduate schools, including the School of Pharmaceutical Sciences, School of Dentistry, School of Nursing & Social Services, School of Psychological Sciences, School of Rehabilitation Sciences, and School of Medical Technology, which was established in 2019. We also have a Dental Hygienist School affiliated with the School of Dentistry. We now have approximately 3,500 active students on our two campuses in Tobetsu and Ainosato. We also have a Sapporo Satellite Campus located near Sapporo station. The main campus is situated in the Tobetsu countryside and is set against a backdrop of rich green hills overlooking the vast Ishikari Plain. An up-to-date facility with modern equipment in such luxurious natural surroundings -- our university is indeed the ideal setting for higher education.

Today, universities face a strong demand for professionals to respond to the various needs of our society. Our university is highly regarded by the outside community and has received outstanding recommendations for its regional contributions among all medical based universities nationwide. These accolades could be earned because of the tireless efforts of our alumni, who number around 20,000. The superb environment provided by our university also encourages club or volunteer activities in addition to academic pursuits. Everything is so enjoyable here that what may seem at first like a long wait before the completion of a course or graduation, actually, goes by in the blink of an eye. As the President of this university, I bear the enormous responsibility of helping each student find his or her career path in the few years that they are enrolled here. Hokkaido is a splendid land, blessed with the beauties of the four seasons. By providing the best education in a land privileged by beauty, our students will find fulfillment in both academic and campus life, and this is what makes the Health Sciences University of Hokkaido a future Mecca for hopeful students, a place all medical based professionals will aspire to attend. We would like to extend our warmest welcome to all aspiring experts to join the Health Sciences University of Hokkaido as we continue to thrive as "the northern base for fostering new health professionals."



# School of Pharmaceutical Sciences



## Comprehensive Education of Pharmaceutical Sciences and Medical Sciences

The conceptual framework of Pharmaceutical Care, as proposed by the World Health Organization, has now spread globally emphasizing the important role of the pharmacist in disease management. The concept stresses the welfare of the patient and the pharmacists' aim to provide the most effective treatments and comprehensive healthcare to the community. The pharmacist is expected to expand his/her expertise from the individual patient to the entire community.

Since the introduction of the 6-year program in 2006, the School of Pharmaceutical Sciences has fostered the development of pharmaceutical professionals in an ideal environment for practical training. The School's vast Medicinal Botanic Garden (approx. 2,900 m<sup>2</sup>) includes the Northern Traditional Medicine Research Center, offering an opportunity for education and research in northern traditional medicines.

In addition, the School offers training programs at universities overseas to nurture pharmacists able to play a leading role in international educational and research activities.

Students are offered tailored guidance and assisted to improve their knowledge using the wonderful learning environment and unique systems already in place.

Consequently, the School has maintained high pass rates in the Japanese national license examination for pharmacists.

### ► School Information

#### Medical Chemistry

- Pharmaceutical Chemistry
- Medicinal Chemistry
- Pharmacognosy

#### Molecular Biosciences

- Biochemistry
- Immunology and Microbiology

#### Biophysical Sciences

- Pharmaco-Analytical Chemistry
- Pharmaco-Physical Chemistry
- Radiopharmaceutical Chemistry

#### Pharmaceutical Health Science & Environmental Toxicology

- Hygienic Chemistry
- Health and Environmental Sciences

#### Pharmacological Sciences

- Pharmacology
- Clinical Pharmacology
- Pathophysiology

#### Pharmaceutics

- Pharmaceutics
- Biopharmaceutics
- Clinical Pharmacy

#### Practical Pharmacy

- Practical Pharmacy
- Hospital Pharmacy

#### Developmental Pharmaceutical Education

- Support Section for Pharmaceutical Education

#### Integrated Human Sciences

# School of Dentistry



## Practice of Total Oral Health

An important characteristic of the School is the development of a 6-year educational program. This innovative program was designed and implemented to bring the students closer to the patients and improve their future practice as clinicians. To maintain the idea that total care treatment is an indispensable practice for oral and dental care, our curriculum is interwoven with a variety of specialized courses not limited to the field of dentistry.

The aim of the School is to produce dentists who can contribute to an overall preventive oral healthcare program and consequently, improve the patient's quality of life.

Another important characteristic of the School is the initiative to make significant contributions to our local communities by examining and treating the disabled. In 1995, a special program was initiated in collaboration with the town of Tobetsu. The program involves visits conducted by dentists to homes of disabled patients who are in need of our services. The School of Dentistry is proud to be a pioneer in the provision of community healthcare.

### ► School Information

#### Oral Rehabilitation

- Periodontology and Endodontology
- Clinical Cariology and Endodontology
- Advanced Operative Dentistry
- Occlusion and Removable Prosthodontics
- Fixed Prosthodontics and Oral Implantology
- Advanced Prosthodontics
- Biomaterials and Bioengineering

#### Oral Biology

- Physiology
- Biochemistry
- Pharmacology
- Microbiology

#### Human Biology and Pathophysiology

- Reconstructive Surgery for Oral and Maxillofacial Region
- Oral and Maxillofacial Surgery
- Oral Regenerative Medicine
- Dental Anesthesiology
- Oral and Maxillofacial Radiology
- Dysphagia Rehabilitation
- Geriatric Dentistry
- Oral Medicine and Pathology
- Internal Medicine

#### Oral Growth and Development

- Orthodontics and Dentofacial Orthopedics
- Pediatric Dentistry
- Disease Control and Molecular Epidemiology
- Anatomy
- Histology

#### Integrated Human Sciences

- Advanced Clinical Education
- Dental Education Development

# School of Nursing and Social Services



## An Innovative Approach in Japan: Integrating Nursing and Social Service

Our school goal is to educate healthcare professionals with a human care spirit who comprehensively understand both nursing and social services. For this purpose, our curriculum is designed to allow students to learn about “human being,” “environment,” “health,” and “practice”. These are very important area for both Nursing and Social Services. In addition, the course title, “Introduction to Nursing and Social Services” provides an opportunity for nursing and social service students to discuss human life, aging, illness, and death together. For people living in local communities, it is important that health, medical, and social services are provided without being fragmented. Today, interprofessional collaboration is highly valued, and personnel who can explore ways of collaboration while demonstrating the human care spirit common to nursing and social services and exhibiting their respective expertise will be greatly sought after in the future.

### ►School Information

#### Nursing

Nurses in Japan are expected to offer holistic human care, providing highly qualified and specialized care for patients compared with the past. The program provided by the School is titled ‘Bachelor of Science in Nursing’. Graduates of this program will be clinical nurses and community care nurses and are expected to provide highly qualified and integrated care to the population (patients and healthy individuals).

- Fundamental Health Sciences
- Fundamentals of Nursing
- Adult Health Nursing
- Maternal and Child Nursing
- Community Health Nursing
- Clinical Nursing

#### Social Management

Social Work education is well established in Japan. However, the actualization of the social work service remains suboptimal. Currently, there is an urgent requirement for professionally trained social workers to play an active role in our society.

Our curriculum aims to educate the social work specialist in the fields of welfare and healthcare. In particular, it emphasizes the value of practicum experience and provides the students with various practicum opportunities. Our educational program includes training on assisting people with physical and/or mental challenges by supporting their physical, psychological, social, and/or economical struggles. Graduates of our program are employed by social agencies, social welfare facilities and organizations, and hospitals.

- Social Care Services
- Social Work
- Mental Health Social Work and Management
- Sports Management
- Integrated Human Sciences

# School of Psychological Sciences



## Be a Certified Public Psychologist Who support for person suffering from mental health problems

Our school trains professionals to assist people with mental health conditions through scientific means. Our educational program enables students to understand the physical, psychological, and social characteristics of such patients, and solve their problems using scientific methods. The curriculum of the School is outstanding due to its emphasis on the scientific approach. The Clinical Psychology program will educate you on psychology in terms of both natural and human sciences.

### ►School Information

#### Clinical Psychology

The Department of Clinical Psychology provides a wide range of psychology courses as well as a variety of medical and cognitive science courses which help students understand the functions of the brain underlying mental health conditions. The curriculum is unique, enabling students to interrelate the basic and clinical sciences investigating the human mind. Moreover, it focuses on the development of clinical skills, with on-site practicum required for all students.

The need for clinical psychologists is currently increasing. Upon completion of the program, the students are awarded a certificate from the Japanese Certification Board for Clinical Psychologists. Students wishing to become Certified Clinical Psychologists, may enroll in our graduate program (Master’s and Doctoral degrees).

# School of Rehabilitation Sciences



## Recovery of Functional Ability Through Rehabilitation Considerably Enhances the Quality of Medical Care

Changes in living environments and habits have led to a strong need for team medical care involving collaboration between highly educated professionals at various stages ranging from the acute phase to the recovery and community living phases. This is the result of complex diseases and a social structure with a low birth rate and progressive aging. When considering disease prevention, inhibition of disease progression, and prevention of relapse from the perspective of total care, improvement of rehabilitation that supports an individuals' recovery of vital functions and enhances their quality of life (QOL) is of crucial importance.

The School of Rehabilitation Sciences aims to develop a rich sense of humanity in medical personnel, in order to provide rehabilitation care based on advanced medical technology and science. This is achieved through integrated education; cooperation between the disciplines of health, medical care, and welfare; and development of scientific expertise acquired via exposure to the curriculum of a medical university.

### ►School Information

#### Physical Therapy

The Department of Physical Therapy provides a variety of course programs, offering the education stressing clinical skills and a progression of scientific knowledge. The curriculum includes how to design and implement various physical therapy regimens as well as specialized testing and other therapeutic measurement methods required in rehabilitation.

Furthermore, excellent communication skills, such as proper attitude and etiquette, help maximize the therapeutic relationship with patients. As programs expand, the available strategies for ensuring comprehensive communication skills can be provided through the different courses. The students develop a range of skills gained from the practicum and standardized patient communication. Local residents participate in daily lectures to participate with our students in order to assess interpersonal skills in individuals with disabilities.

The program produces highly skilled physical therapists who are able to participate in a multi-professional team through extensive training in the field of "healthcare, medical care, and social welfare" using the university's extensive educational resources.

#### Occupational Therapy

"Occupation" refers to all activities in daily life (such as self-care skills), so that the type of support provided by occupational therapist varies. Occupational therapists practice in a wide range of public, private and voluntary sector settings; medical institutions, social welfare facilities, private home environment, schools, and workplaces.

In the early stages of training, students visit medical institutions and social welfare facilities in order to become occupational therapists who can implement and understand comprehensive medical care by experiencing cooperation between physical therapists, health-care workers, and other professionals.

Furthermore, by extensive study about support for social reintegration and employment of individuals with disabilities, students systematically learn the basics of rehabilitation and also the advanced skills for occupational therapy that provide a variety of approaches in the Department of Occupational Therapy.

#### Speech-Language-Hearing Therapy

The Department of Speech-Language-Hearing Therapy is designed for students who wish to become speech-language pathologists and audiologists. The curriculum covers the subjects required for national certification as well as addresses the study of the human mind from basic to clinical areas. In addition, our 4-year undergraduate program emphasizes on clinical training.

Since the revision of the national health plan, the demand for speech therapists has been increasing rapidly. Upon completion of the undergraduate program, students are eligible to take the examination for the national certificate of "Speech-Language-Hearing Therapist".

# School of Medical Technology



## We cultivate clinical laboratory technologists of the new era in a new department of a health sciences university.

The Department of Clinical Laboratory Science at the School of Medical Technology was established in 2019 as the first private four-year university department for cultivating clinical laboratory technologists in Hokkaido and Tohoku areas of Japan. Our educational aims include formation of humanity as a medical professional and acquisition of communication skills, which are needed for Interprofessional team healthcare, regional medical services and home healthcare, as well as learning of knowledge and skills of clinical examination. Additionally, students will be cultivated into advanced specialists and researchers who will be front-runners in coming eras via graduation study on medical technology. The graduates will be qualified to take national registered clinical laboratory technologist exam plus qualifying exams related to food. Extensive education is provided on health, medicine and welfare, aiming to nurture clinical laboratory technologists capable of playing active parts in diverse fields.

### ►School Information

#### Clinical Laboratory Science

A systematic four-year education is provided via offering graduated series of basic and practical courses on clinical examination starting from the first year, leading to the overall summary of challenging the Objective Structured Clinical Examination (OSCE) in the third year. Afterwards, the students receive clinical training at a medical institute in various regions of Hokkaido and prepare for the national exam. In this way, systematic education will be provided throughout the four years.

#### Major subjects

- Anatomy
- Physiology
- Clinical chemistry
- Medical engineering
- Clinical pathophysiology
- Clinical hematology
- Laboratory Immunology
- Microbiology
- Medical Imaging

# Dental Hygiene School Attached to School of Dentistry



## Cultivating specialists in dental disease prevention

Dental Hygiene School attached to the School of Dentistry established in 1984 has turned out more than 1,500 graduates, and almost all of them have obtained the national dental hygienist qualification.

As an affiliate of the School of Dentistry, our School is well-equipped, has highly specialized instructors, and has a diverse learning program. We believe that our mission is to send out dental hygienists to the international community with a warm heart that is close to patients and a cool head that provides accurate treatment and preventive care based on the latest medical science knowledge through this program.

### ► School Information

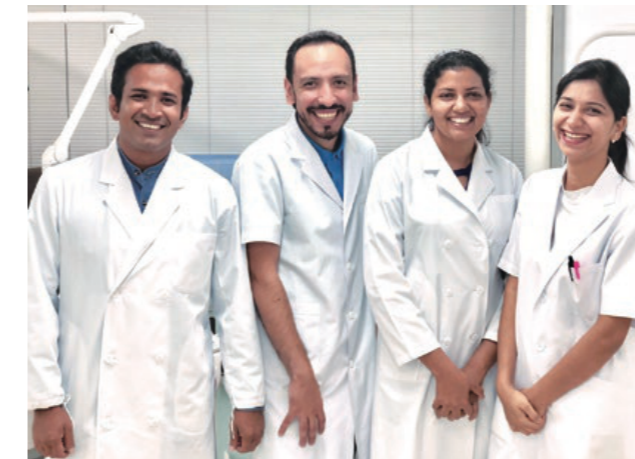
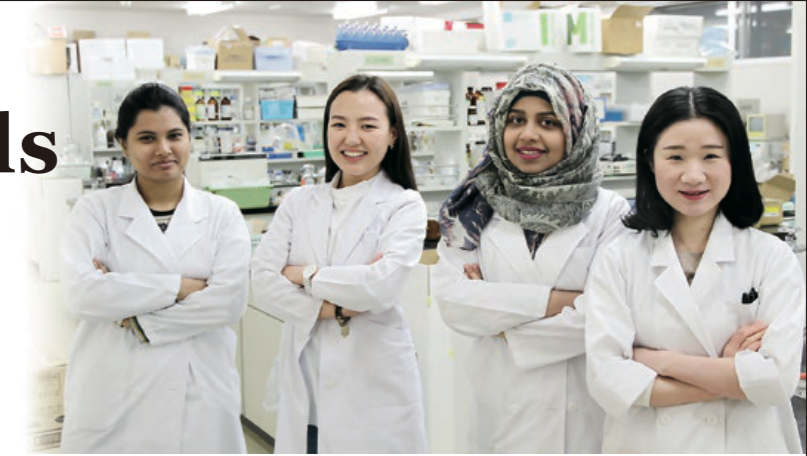
#### Roles of dental hygienist

Dental hygienists contribute not only to the prevention of dental caries and periodontal disease, but also to the prevention of aspiration pneumonia and heart infections in the elderly and seriously ill patients. In addition, they specialize in assisting aesthetic dentistry such as orthodontics, and whitening, and assisting those who cannot eat well due to disabilities; and their duties have been expanding in recent years on a global basis.

# Graduate Schools

There are 6 Graduate Schools in the HSUH:  
Pharmaceutical Sciences, Dentistry, Nursing & Social Services,  
Psychological Sciences, Rehabilitation Sciences,  
and Medical Technology Sciences.

Under the concept of the total care treatment, every Graduate School conducts original as well as interdisciplinary research.



## Graduate School of Pharmaceutical Sciences

**To Meet Society's Increasing Need for Accomplished Medical Professionals, We Offer Pharmaceutical Sciences Doctoral Program in Different Courses**

The Doctoral Program trains students in pharmaceutical research via 2 courses: Basic Pharmaceutical Sciences and Clinical Pharmaceutical Sciences which includes a Cancer Specialist Pharmacy specialization.

### Pharmaceutical Sciences

#### Doctoral Program

- Basic Pharmaceutical Sciences
- Clinical Pharmaceutical Sciences

## Graduate School of Dentistry

**From General Dentistry to Dental Medicine: Developing a Perspective of Comprehensive Care**

Modern dentistry is changing from the practice of treating oral diseases to a health science with emphasis on prevention and care for each patient. The Graduate School has created a research course as well as a Certified/Specialized Physician course to respond to the needs of modern dental science. We are committed to training dental practitioners and researchers who will be able to treat patients from a comprehensive perspective and further develop dental medicine, respectively.

### Dentistry

#### Doctoral Program

#### Research Course

- Anatomy
- Histology
- Biochemistry
- Clinical Oral Pathology
- Microbiology
- Pharmacology
- Biochemistry
- Biomaterials Engineering
- Health and Hygiene
- Periodontics and Endodontics
- Dental Caries Control Therapeutics
- Occlusal Prosthetic Reconstruction
- Crowns and Bridges and Implant Prosthodontics
- Reconstructive Oral Surgery
- Maxillofacial Science
- Orthodontics
- Pediatric Dentistry
- Dental Radiology
- Dental Anesthesia

**Active Collaboration With Domestic and International Researchers and a Wide Range of Opportunities for Academic Conference Presentations**

Researchers are encouraged to actively collaborate with other universities, both domestic and overseas to promote global interdisciplinary research. We are pleased to host regular lectures (at least 4 times a year) on selected research topics delivered by lecturers invited from abroad. In addition, the university supports graduate students with regard to presentation and publication of research findings. Furthermore, most students participate in international conferences.

### Certified Physician and Medical Specialist Training Courses

- Periodontist
- Laser Dentistry Certification
- Oral Implantologist
- Oral Surgeon
- Dental Anesthetist
- Oral Pathologist
- Pediatric Dentistry Specialist
- Japanese Society for Oral Health Certification
- Esthetic Dentistry Certification
- Adhesive Dentistry Certification
- Conservative Dental Treatment Specialist
- Prosthodontist
- Geriatric Dental Medicine Certification
- Temporomandibular Joint Specialist
- Dental Radiologist
- Orthodontist
- Individuals with Disabilities Specialist
- Psychosomatic Dentistry Specialist

### Dual Ph.D. Program Offered by the College of Oral Medicine at Taipei Medical University and the Graduate School of Dentistry at the HSUH

The Dual Ph.D. Program is a degree program with credit transfer arrangements, in which Taipei Medical University and the HSUH separately confer a Ph.D. on students successfully passing the examinations. As professionals with a global

outlook and high level of proficiency in the English language, holders of the dual Ph.D. are expected to play an important role in the field of dentistry internationally.

## Graduate School of Nursing & Social Services

### Nurse Practitioner (NP) and Certified Nurse Specialist (CNS) Educational Programs Enhancing Specialization

In the Master's degree program, we provide an Advanced Practice Nursing courses, including CNS program as well as Nurse Practitioner program. We also provide research focused program. In addition, Public Health Nurse program will start in 2025.

#### Nursing (Pre-Doctoral and Post-Doctoral)

Master's Program    Doctoral Program

#### Fundamental and Integration Field

- Fundamentals of Nursing
- Nursing Management Science
- Regional Nursing Home Care
- Nursing and Infection Control

#### Developmental Disabilities Field

- Pediatric Nursing
- Maternal Nursing
- Adult Nursing
- Gerontological Nursing
- Psychiatric Nursing
- Cancer Patient Nursing

### Cultivating Specialists Who Can Actively Move Beyond the Framework of Social Welfare

In the Department of Clinical Social Work, our prime objective is the improvement of the overall quality of life for all individuals. It is our goal to train highly specialized professionals who continually contribute to the overall improvement of social service areas such as health, medicine, and welfare. Through practical experience, we refine the ability of students to address various challenges in creating, maintaining, and managing programs; cooperate with other social divisions; and aid in social welfare consultations.

#### Clinical Social Work(Pre-Doctoral and Post-Doctoral)

Master's Program

- Individuals with Disabilities Welfare Studies
- Elderly Care Welfare Studies
- Child Welfare Studies
- Epidemiological Welfare Studies

Doctoral Program

- Welfare Assistance
- Welfare Policy and Management

## Graduate School of Psychological Sciences

### The First Graduate School for Training of Clinical Psychologists

To meet the demands of modern society, the department conducts research and provides education focused on the following four areas: curriculum reform, improvement of student teaching, internet-based clinical psychological aid for remote areas, and community support projects.

#### Clinical Psychology (Pre-Doctoral and Post-Doctoral)

Master's Program    Doctoral Program

- Clinical Psychology

## Graduate School of Medical Technology Sciences

**In the field of clinical laboratory science, there is a strong demand for professionals who can accurately identify new challenges, acquire the latest knowledge and technology in areas such as preventive medicine, AI, and infection control, and effectively apply their acquired knowledge and skills in clinical settings.**

Given this, in order to advance the field of clinical laboratory science by developing highly specialized professionals in this field, and with a view to contributing to the development of local communities and promoting the well-being of individuals, we established the Master's Program in in the Graduate School of Medical Technology Sciences in April 2023. In this program, we have developed a curriculum to further develop the foundational skills acquired during undergraduate education in specialized areas of clinical laboratory science. Additionally, we are fostering the groundwork for researching new clinical laboratory techniques and methods through collaboration with the university's existing faculties, departments, and related academic fields, all while considering the needs of society and the challenges in the field of healthcare.

#### Clinical Laboratory Sciences

Master's Program

- Physiological analysis
- Immunology and Cell Biology
- Department of Genetic Testing
- Pathological informatics
- Infection biology
- Molecular and Cellular Pathology
- Hematology

## Graduate School of Rehabilitation Sciences

### We Aim to Scientifically Validate the Interventional Effects of Physical Therapy and Occupational Therapy, and Train Highly Skilled Professionals in the Field of Rehabilitation

At the Graduate School of Rehabilitation Sciences, we view disease prevention (primary prevention), life-saving and inhibition of disease progression (secondary prevention), as well as prevention of disease recurrence (tertiary prevention) from the perspective of total care in the fields of health, medical care, and welfare. Moreover, we aim to train personnel who can practically and scientifically promote the application of intervention methods designed to enhance the vital functions and quality of life of patients.

#### Rehabilitation Sciences

Master's Program    Doctoral Program

- Anatomy, Physiology, and Kinesiology
- Rehabilitation and Therapeutics
- Community-based Rehabilitation

A distinctive feature of the Graduate School of Rehabilitation Sciences is the pursuit of rehabilitation science as a discipline sharing the foundations of physical therapy and occupational therapy. We use the following three research fields as pillars for promoting education and research: anatomical functioning and pathological analysis, rehabilitation therapy, and community health living support.

We also established an educational environment in community medical institutions and facilities in order to train highly skilled professionals who will assume leading roles in medical teams providing high-quality rehabilitation using advanced expertise and skills in the fields of health, medical care, and welfare.

# Partner Institutions

There are ongoing exchanges of students and faculty members, short-term exchange programs, and academic seminars between the HSUH and partner institutions.

In addition, we participate in language & culture seminar programs held annually at partner universities. Moreover, there are numerous collaborative research projects being conducted with universities and institutes worldwide.

### Cooperation Between Universities

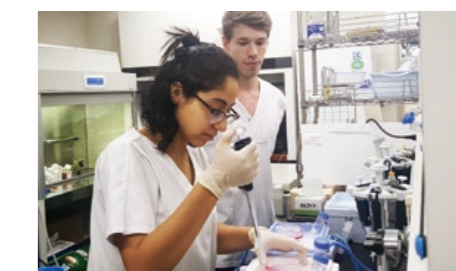
University	Collaboration Year
University of Alberta (Edmonton, CANADA)	1992
Taipei Medical University (Taipei, TAIWAN)	2004
Central South University (Changsha, CHINA)	2007
Far Eastern State Medical University (Khabarovsk, RUSSIA)	2016
Mongolian National University of Medical Sciences (Ulaanbaatar, MONGOL)	2023

### Cooperation Between Faculties

University	Faculty	Our Faculty	Collaboration Year
Tongji University(Shanghai, CHINA)	Stomatology	Dentistry	1993
University at Buffalo, State University of New York (Buffalo, USA)	Nursing Social Work	Nursing & Social Services	1996
University of Indonesia (Depok, INDONESIA)	Dentistry	Dentistry	2007
University of Strasbourg (Strasbourg, FRANCE)	Dental Surgery	Dentistry	2010
Sun Yat-sen University (Guangzhou, CHINA)	Stomatology	Dentistry	2014
Mahidol University(Bangkok, THAILAND)	Dentistry	Dentistry	2015
University of Gothenburg (Gothenburg, SWEDEN)	Odontology	Dentistry	2015
University of British Columbia (Vancouver, CANADA)	Dentistry	Dentistry	2016
Medical University of Lublin (Lublin, POLAND)	Dentistry	Dentistry	2017
Tufts University(Boston, USA)	Dental Medicine	Dentistry	2018
Chulalongkorn University (Bangkok, THAILAND)	Dentistry	Dentistry	2018
	Allied Health Sciences	Rehabilitation Sciences	2020
City Dental College(Dhaka, BANGLADESH)	Dentistry	Dentistry	2018
Soongsil University(Seoul, SOUTH KOREA)	Social Welfare	Nursing & Social Services	2018
Kathmandu University(Kathmandu, NEPAL)	Dentistry	Dentistry	2018
Kyung Hee University(Seoul, SOUTH KOREA)	Dentistry	Dentistry	2019
SEGi University(Kuala Lumpur, MALAYSIA)	Dentistry	Dentistry	2019
Universiti Teknologi MARA(Kuala Lumpur, MALAYSIA)	Dentistry	Dentistry	2019
The Catholic University of Korea(Seoul, SOUTH KOREA)	Social Welfare	Nursing & Social Services	2019
Hasanuddin University(Makassar, INDONESIA)	Dentistry	Dentistry	2023
The University of Hong Kong(Pokfulam, HONG KONG)	Dentistry	Dentistry	2023

### Cooperation With Institutions

Institutions	Our Faculty	Collaboration Year
Territorial state budgetary educational institution of postgraduate professional education "Institute of postgraduate education for public health specialists" (Khabarovsk, RUSSIA)	All	2017
Biomedical Technology R&D Center of China Medical University Hospital (Taichung, TAIWAN)	Dentistry	2019
Thüringen-Kliniken Saalfeld (Thüringen, GERMANY)	Dentistry	2023
The Research Center for Social Inclusion of People with Psychosocial Disabilities, The Research Institute of the Differently Aabled Person's Right in Korea (Seoul, SOUTH KOREA)	Advanced Research Promotion Center	2023



### Short-Term Exchange Program

We offer an exchange program (duration: approximately 1-10 weeks) provided in English for the students of our partner universities.

Through this program, students have the opportunity to learn different aspects of Japanese health sciences and interact with local students as well as students of other universities from around the world.

### International Education and Exchange Center

In 2013, the Global Networking Office was established. In 2017, the center was restructured and renamed to International Education and Exchange Center (IEEC). The principal objectives of the IEEC are to promote the HSUH abroad and exchange cultural views and new ideas on education systems with various institutes and universities from around the world. Moreover, the IEEC offers support to foreign students during their stay in Japan and assists them in every possible way. Currently, the IEEC has activities in four sectors: International collaboration and exchange, overseas admission of interested applicants, research and educational exchange, and international student counseling. The International activities of all schools of the HSUH are supported and promoted by the IEEC.

Mail: [globalnetworkingoffice@hoku-iryu-u.ac.jp](mailto:globalnetworkingoffice@hoku-iryu-u.ac.jp)



# Facilities

## Tobetsu Campus

The Tobetsu Campus is the main campus of the HSUH. It comprises the Administrative Section, School of Pharmaceutical Sciences, School of Dentistry, School of Nursing and Social Services, School of Rehabilitation Sciences, and School of Psychological Sciences. In addition, it includes many facilities and institutions supporting research and education. The campus is surrounded by farms and hills. The students enjoy the quietness of the white in winter and lively green in summer. It can be reached by train from Sapporo Station (40-minute ride).

- School of Pharmaceutical Sciences
- School of Dentistry
- School of Nursing & Social Services
- School of Psychological Sciences
- School of Rehabilitation Sciences
- Dental Hygiene School



**Central Lecture Building**

The Central Lecture Building is a 10-floor facility including lecture rooms and practice rooms used by the School of Pharmaceutical Sciences and School of Rehabilitation Sciences, as well as recreation areas for students. This is the new landmark of the university.



**HSUH Dental Clinic**

Departments of the HSUH Dental Clinic include Operative Dentistry, Endodontics, Periodontics, Prosthetics, Oral and Maxillofacial Surgery, Pediatric Dentistry, Orthodontics, Dental Anesthesiology, and Dental Radiology. The Clinic offers care to the local community, students, and staff.



**Barrier-free Lab**

The 6th and 7th floors of Central Lecture Building have training rooms for Department of Physical Therapy and Occupational Therapy of Faculty of Rehabilitation Sciences. The latest equipments are installed in each room.



**Clinical Pharmacy Training Room**

The Clinical Pharmacy Training Room recreates the pharmacists' workplace. Facilities include Prescription Laboratory, Aseptic Dispensing Pharmacy, Injection Management Room, and Mock Pharmacy. All training environments are designed to be as similar as possible to real hospital and pharmacy settings.



**Northern Ecological Garden**

The Northern Ecological Garden is in possession of a vast forest, including a 2-km wood chip walking path, allowing the visitor to observe more than 500 kinds of plants.



**Interprofessional Collaborative Practice Room**

A robotic dental patient called "Simroid" takes part in educational classes for the "Interprofessional collaboration in health". It effectively approach to improve both their technical and communication skills.



**Medicinal Botanic Garden**

The Garden contains more than 250 species of medicinal plants growing naturally in the northern area. The greenhouse contains 220 species of plants from around the world, including many rare plants used for medicinal purposes. The garden is open to the public and contributes to public education in medicinal and natural sciences.



**Northern Traditional Medicine Research Center**

The center investigates the medicinal properties of previously unknown medicines and drugs from the northern medical traditions while promoting gene conservation of endangered species and cultivation methods. The center includes an observation terrace for observing the changing seasons.

# Tobetsu Campus



## University Library

The library possesses more than 250,000 copies of books, journals, periodicals, and audio-visual materials. A variety of reference services is available including the utilization of CD-ROM and the Internet. Of note, there is also a branch library on the Ainosato campus.



## Center for Experimental Animals

The center maintains more than 1,500 experimental animals and it is managed by the Animal Ethics and Research Committee. All experiments involving animals are conducted in compliance with "The Guidelines for the Care and Use of Laboratory Animals, HSUH".



## Advanced Research Promotion Center

The center was established to develop cutting-edge research in Health Sciences University of Hokkaido. The center consists of two major research fields: Natural science and Social science. Each field jointly promotes seminal research works in Health Sciences University of Hokkaido.



## Cafeterias

There are 3 cafeterias in our campus with various menus. The Memorial Hall cafeteria is the newest and it commands a fine view of the Ishikari Plains.



Shibuya Double Tall Cafe



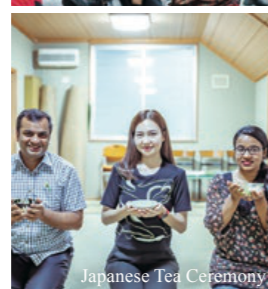
YOSAKOI Soran Festival



University Festival



Training Center



Japanese Tea Ceremony



Aikido

Club Activities

# Sapporo Ainosato Campus

The Ainosato Campus is located on the north of Sapporo city. It can be reached by train from Sapporo Station (22-minute ride). The area includes a quiet residential facilities and a shopping center.

The Ainosato Campus includes School of Medical Technology, Graduate School of Psychological Sciences, and HSUH Hospital and Institute of Preventive Medical Science.



- School of Medical Technology
- Graduate School of Psychological Sciences



## HSUH Hospital

The hospital was renamed to HSUH Hospital in 2005. The former hospital was attached to the School of Dentistry. Our university's excellent human resources (e.g., medical doctors, dentists, psychologists, pharmacologists, speech therapists, nurses, social workers, and researchers) work more collaboratively. The people in the community depend on our hospital and appreciate our humanistic approach. We are providers of exemplary patient care, innovative research, and teaching.

The hospital consists of medical departments including Internal Medicine, Psychosomatic Internal Medicine, Pediatrics Service, Orthopedics, Otolaryngology, Ophthalmology, Gastroenterology, and Dermatology. Dental departments include Operative Dentistry, Endodontics, Periodontics, Prosthodontics, Oral and Maxillofacial Surgery, Orthodontics, Pediatric Dentistry, and Dental Anesthesiology. Moreover, there are inpatient units, two operating rooms, and clinical psychology treatment rooms as well as treatment rooms for speech and hearing. Our hospital makes an effort to develop improved treatments for disease in cooperation with the School of Dentistry, School of Pharmaceutical Sciences, School of Nursing and Social Services, and School of Psychological Sciences. The Institute of Preventive Medical Science was founded in 1990. This is a clinical, experimental, and educational organization of the HSUH offering medical, dental, pharmaceutical, and psychological studies. The HSUH hospital is attached to the institute for clinical treatment and study



## Regional Comprehensive Care Center

The Regional Comprehensive Care Center was founded in December 2015 as an activity base for community medical services provided primarily by the Home-visit Nursing Care Station and the Home Care Support Facility. With training rooms and a community exchange salon for interactions between students and local residents, the Center provides an opportunity for practical clinical education involving interprofessional collaboration and regional comprehensive care.



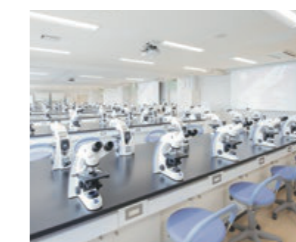
## Graduate School of Psychological Sciences

This School was established in 2001 in order to foster medical personnel supporting patients with psychological disorders or communication disorders.



## Ainosato Branch of University Library

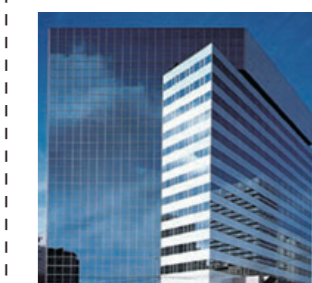
This library branch possesses 24,000 books associated with psychological sciences, and allows access to academic information resources through a network with the main library.



## Morphological analysis laboratory

Students can learn to observe and classify various cells and microorganisms using a microscope in clinical hematology practice, clinical cytopathology practice, and microbiology practice.

## Other



## Satellite Campus

The Satellite Campus is located in central Sapporo. Facilities include 2 lecture theatres, 2 meeting rooms, and a research room.